

Gemini X Linear

Take control of your PCB registration

The XACT Principle

Accurate prediction of inner layer scale factors requires two key elements:

- (a) an intelligent system for controlling and recording scale distortion after bonding and prior to drilling
- (b) a powerful prediction algorithm linking CAM stackup and actual process data.

The XACT Gemini X Linear family is the industry's leading smart registration solution

Gemini-X Linear - is our entry level registration system for PCB fabricators who need to understand the fundamental causes of registration errors exhibited in the manufacturing processes.

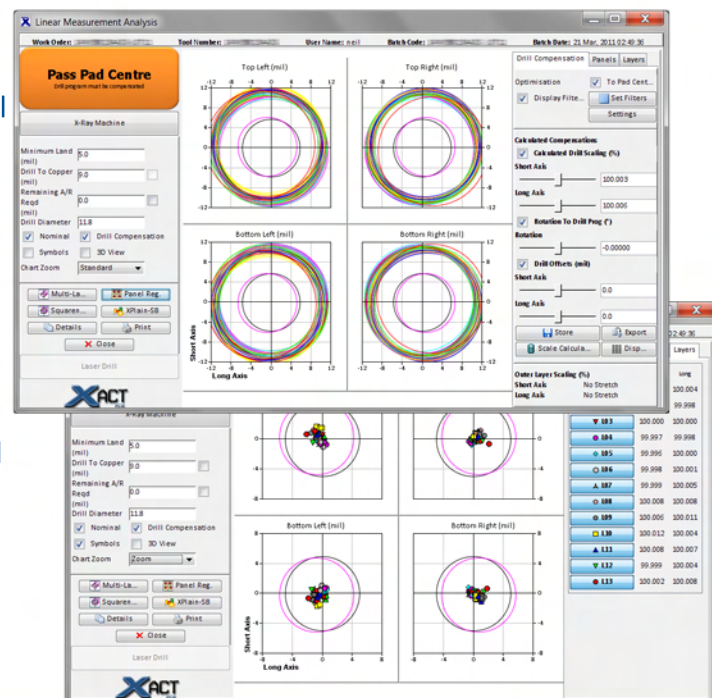
The system provides a powerful analysis engine to interpret measurement data from existing industry standard production machines. The graphical interfaces allow users to see the systematic and variable errors present in the product. Systematic scale errors can then be eliminated. Prior to drilling, the variable errors are minimised by the optimisation algorithm.

Linear

- Determine post lamination scale error & compensate drill program dynamically.
- Reduce batch variability.
- Improve yield immediately
- Intelligent reaction

Better understanding for best yields

- Advanced analysis options
- Intuitive interface
- Easy to understand graphical interface displaying systematic and variable errors
- Scale errors for each layer
- Batch and panel analysis
- Enhanced analysis engine for interpretation of measurement data
- Automated links to standard manufacturing machines
- Smart integration with CAM
- Integrated database
- Automatic drill scaling information



Contact: info@xactpcb.com, www.xactpcb.com

XACTPCB Limited, Saville Exchange, North Shields, Tyne and Wear, UK.