

Gemini X Linear+

Predict your registration

Gemini-X Linear+ has at its core a powerful self-learning model constantly analysing design and measurement information.

As a result, Linear+ is able to predict the material movement that will occur with any PCB design according to the combination of materials and processing parameters used. An intuitive and automated engineering stack-up model offers a fast and easy-to-use method of entering design information, running design rule checks and interrogating the self-learning model to determine accurate inner layer scale factors.

Design information is then combined with measurement results and fed back to the database for adaptive tuning of the model.

The continuous learning capability of the system ensures that the scale factor values always reflect the current status of the manufacturing processes. The system calculates the influence of each individual material component within a design so that compensation values can be calculated for any combination of these components whether manufactured previously or not.

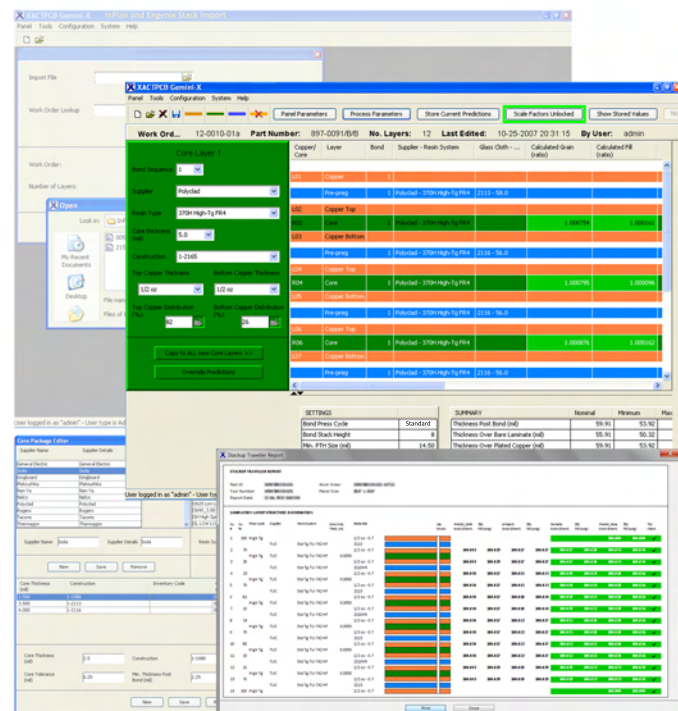
- All the features of Linear with advanced prediction of scale factors
- Accurate layer scaling in seconds
- Smart integration with CAM
- Import stackups from **InPlan**, **Engenix**, **Procim**, **Direct Logix**, **SQL**, **CSV**, **XML**, **Genesis**, **Polar** and other industry or bespoke systems.
- Export data in xml and other formats for transfer to CAM and Pre-CAM systems
- Automated calculation of remake scale factors
- Secure networked system
- Multiuser access with configurable control
- Management reporting

Linear+

All the features of Linear combined with advanced prediction capability.

Interfaces to CAM and production machines

Intelligent self learning system accurately predicts inner layer scale factors.



A powerful solution to a complex problem



Contact: info@xactpcb.com, www.xactpcb.com

XACTPCB Limited, Saville Exchange, North Shields, Tyne and Wear, UK.